

10B 系列 SERIES Nylon (Blue)



Wheel Features

Tread Material:	Nylon	Core Material:	Nylon
Bearing:	Without Bearing	Tread Hardness:	75D±3
Temperature:	-30°C~90°C	Running Speed:	3.2km/h

Note: Use beyond temperature range or beyond the recommended speed may shorten product life or even damage the product.



- ✓ Injection nylon, high load capacity, high wear resistance
- ✓ No deformation, anti-aging, endurable to humid environment
- ✓ Arc wheel surface, operation labor saving
- ⚠ Hard wheel material, it may damage epoxy flooring

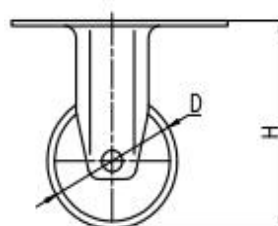
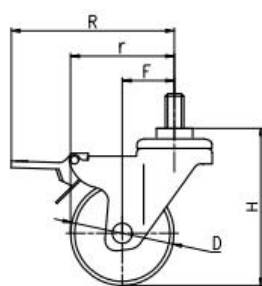
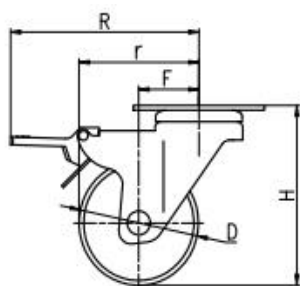


Rolling resistance	■ ■ ■ ■ ■	Excellent
Wear resistance	■ ■ ■ ■ ■	Excellent
Operating noise	■ ■ □ □ □	Acceptable
Floor surface preservation	■ ■ □ □ □	Acceptable

Bracket Features

- ✓ Easy to operate, convenient to release the brake
- ✓ Chrome plating, bright and beautiful
- ✓ Brake fatigue can reach more than 3000 times
- ⚠ Wheel brake only, without direction lock function

Parameter (mm)	Capacity (KG)	Wheel Dia.	Wheel Width	Total Height	Offset	Swivel Radius	Swivel Radius
1"	10 kg	25	13	37.5	15.5	28	47.5
1.25"	15 kg	32	13	44.5	15	31	49
1.5"	20 kg	38	17	52	18.5	37.5	59.5
2"	25 kg	50	17	64	19	44	62.5



[English]

Mounting Drawing

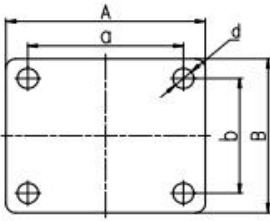


Plate Swivel

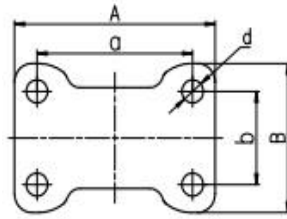
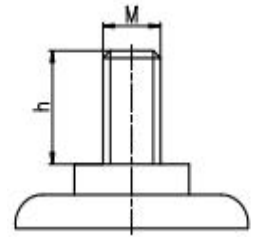


Plate Fixed



Threaded Stem

Wheel Size (inch)	Wheel Dia. (mm)	Plate Size (mm)	Pitch-row (mm)	Pore Dia. (mm)
1"	25	39×33	30×24	4.3
1.25"	32	39×33	30×24	4.3
1.5"	38	46×39.5	36×28	4.3
2"	50	46×39.5	36×28	5.2

Wheel Size (inch)	Wheel Dia. (mm)	Plate Size (mm)	Pitch-row (mm)	Pore Dia. (mm)
1"	25	38×30	30×24	4.3
1.25"	32	39×33	30×24	4.3
1.5"	38	46×37.5	36×28	4.3
2"	50	46×38	36×28	5.2

Wheel Size (inch)	Wheel Dia. (mm)	Stem (mm)
1"	25	M8×20
1.25"	32	M8×20
1.5"	38	M8×20
2"	50	M10×25

Product ID

Product Images



Wheel Size

Plate swivel

Plate fixed

Plate swivel brake

Threaded stem

Threaded stem brake

1"

10B01-1514

10B02-1514

10B03-1514

10B04-1514

10B05-1514

1.25"

10B06-1515

10B07-1515

10B08-1515

10B09-1515

10B10-1515

1.5"

10B11-1516

10B12-1516

10B13-1516

10B14-1516

10B15-1516

2"

10B16-1517

10B17-1517

10B18-1517

10B19-1517

10B20-1517

Product Details



New nylon, anti - aging, arc wheel surface, move easily.

Chrome surface treatment, bright and beautiful.



Double steel bowl design, stable structure, flexible rotation.

