

Wheel Features

Tread Material:	High Strength PP	Core Material:	High Strength PP
Bearing:	Derlin	Tread Hardness:	75D±3
Temperature:	-25°C~80°C	Running Speed:	4km/h

Note: Use beyond temperature range or beyond the recommended speed may shorten product life or even damage the product.



- ✔ Derlin bearing, waterproof, rust-proof
- ✔ Injection polypropylene, integral injection, low starting force, economical choice
- ✔ No deformation, anti-aging, durable to humid environment
- ⚠ Not wear-resistant material
- ⚠ Wheel running may cause some noise

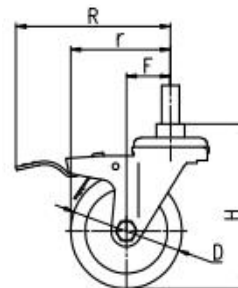
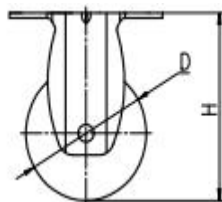
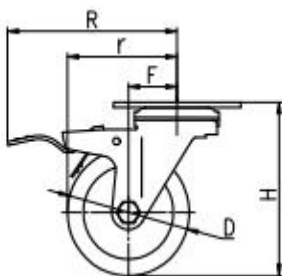


Rolling resistance	■ ■ ■ ■ ■	Excellent
Wear resistance	■ ■ ■ □ □	Good
Operating noise	■ □ □ □ □	Acceptable
Floor surface preservation	■ ■ □ □ □	Acceptable

Bracket Features

- ✔ Easy to operate, convenient to release the brake
- ✔ 304 Stainless Steel material pressed, anti-rust and anti-corrosion
- ✔ Dustproof ring effectively protects grease for long service life
- ✔ Polishing treatment, excellent appearance
- ✔ Galvanized, salt spray test over 48 hours

Parameter (mm)							
Wheel Size	Capacity	Wheel Dia.	Wheel Width	Total Height	Offset	Swivel Radius	Swivel Radius
3"	105 kg	75	30	108	34	71.5	108.5
4"	135 kg	100	32	135	32	82	108.5
5"	145 kg	125	32	160	32	94.5	112.5



[English]

Mounting Drawing

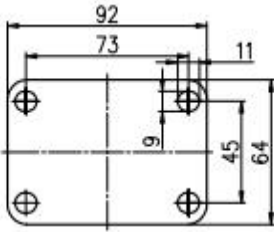


Plate Swivel/Brake

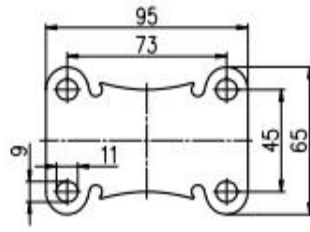
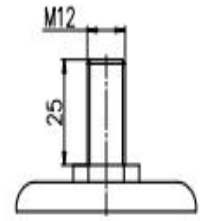


Plate Fixed



Threaded Stem

Product ID					
Wheel Size	Plate swivel	Plate fixed	Plate swivel brake	Threaded stem	Threaded stem brake
3"	20D01-1379	20D03-1379	20D02-1379	20D13-1379	20D14-1379
4"	20D07-1380	20D09-1380	20D08-1380	20D15-1380	20D16-1380
5"	20D10-1381	20D12-1381	20D11-1381	20D17-1381	20D18-1381

Product Details



Electrolytic polishing looks beautiful.

Double ball bearing and inlaid dust cover can effectively prevent dust, anti-winding.



Dust ring can effectively dust and grease.

