

Wheel Features

Tread Material:	PU	Core Material:	High Strength PP
Bearing:	Single Ball Bearing	Tread Hardness:	95A±3
Temperature:	-20°C~50°C	Running Speed:	4km/h

Note: Use beyond temperature range or beyond the recommended speed may shorten product life or even damage the product.



- ✔ Precision ball bearing, flexible rotation
- ✔ Advanced injection polyurethane, glue-free self lock structure oil resistance, wear resistance
- ✔ Environmental protection, quiet, effectively protect the floor
- ✔ With plastic covers, thread-proof design
- ⚠ High temperature and humidity may shortened service life

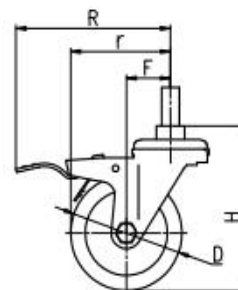
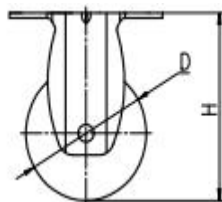
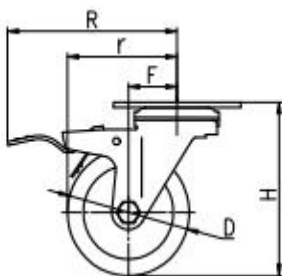


Rolling resistance	■ ■ ■ ■ □	Very good
Wear resistance	■ ■ ■ ■ ■	Excellent
Operating noise	■ ■ ■ ■ □	Very good
Floor surface preservation	■ ■ ■ ■ □	Very good

Bracket Features

- ✔ Easy to operate, convenient to release the brake
- ✔ 304 Stainless Steel material pressed, anti-rust and anti-corrosion
- ✔ Dustproof ring effectively protects grease for long service life
- ✔ Polishing treatment, excellent appearance
- ✔ Galvanized, salt spray test over 48 hours

Parameter (mm)							
Wheel Size	Capacity	Wheel Dia.	Wheel Width	Total Height	Offset	Swivel Radius	Swivel Radius
3"	100 kg	75	32	108	34	71.5	108.5
4"	130 kg	100	32	135	32	82	108.5
5"	140 kg	125	32	160	32	94.5	112.5



[English]

Mounting Drawing

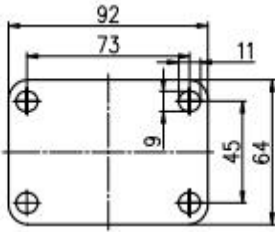


Plate Swivel/Brake

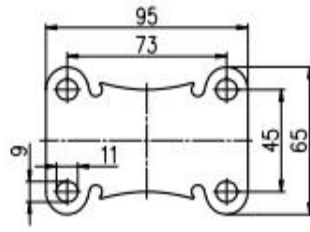
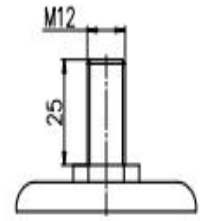


Plate Fixed



Threaded Stem

Product ID					
Product Images					
Wheel Size	Plate swivel	Plate fixed	Plate swivel brake	Threaded stem	Threaded stem brake
3"	20D01-1354	20D03-1354	20D02-1354	20D13-1354	20D14-1354
4"	20D07-1355	20D09-1355	20D08-1355	20D15-1355	20D16-1355
5"	20D10-1356	20D12-1356	20D11-1356	20D17-1356	20D18-1356

Product Details



Electrolytic polishing looks beautiful.

Concave-convex designed cover, three-dimensional and beautiful. The arc wheel is easy to move.



Dust ring can effectively dust and grease.

