

Wheel Features

| | | | |
|-----------------|--------------|-----------------|------------|
| Tread Material: | PU | Core Material: | Steel Core |
| Bearing: | Ball Bearing | Tread Hardness: | 95A±3 |
| Temperature: | -25°C~60°C | Running Speed: | 4km/h |

Note: Use beyond temperature range or beyond the recommended speed may shorten product life or even damage the product.




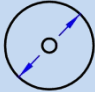


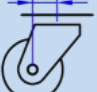


- ✔ 2 precision ball bearings, flexible rotation
- ✔ Cast polyurethane on steel core, oil resistant, wear resistant, durable
- ✔ Environmental protection, quiet, effectively protect the floor
- ⚠ High temperature and humidity may shortened service life

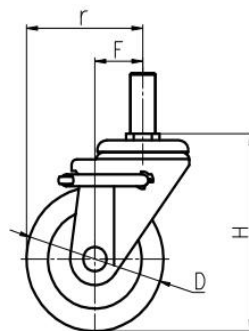
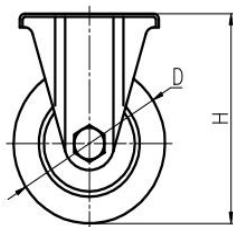
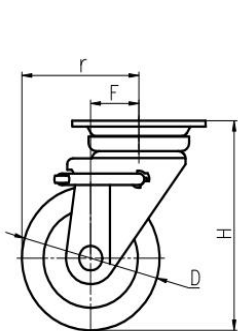


| | | |
|----------------------------|-----------|-----------|
| Rolling resistance | ■ ■ ■ ■ □ | Very good |
| Wear resistance | ■ ■ ■ ■ ■ | Excellent |
| Operating noise | ■ ■ ■ ■ □ | Very good |
| Floor surface preservation | ■ ■ ■ ■ □ | Very good |

Bracket Features

- ✔ Side brake, easy to operate
- ✔ Bracket made of pressed steel plate, firm and strong
- ✔ Hollow riveted structure, effortless to rotate
- ✔ Environmentally friendly colour galvanized, salt spray test over 72 hours

| Parameter (mm) |  Capacity |  Wheel Dia. |  Wheel Width |  Total Height |  Offset |  Swivel Radius |  Swivel Radius |
|----------------|--|--|---|--|--|---|---|
| 3" | 120 kg | 75 | 32 | 100 | 23.5 | 61 | 61 |
| 4" | 230 kg | 100 | 32 | 144 | 35 | 85 | 85 |
| 5" | 280 kg | 130 | 35 | 172 | 38 | 103 | 103 |
| 6" | 330 kg | 150 | 38 | 197 | 40 | 115 | 115 |
| 8" | 400 kg | 200 | 42 | 250 | 58 | 158 | 158 |



Mounting Drawing

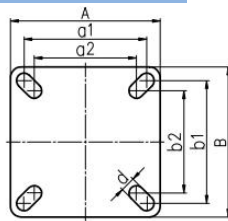


Plate Swivel/Brake

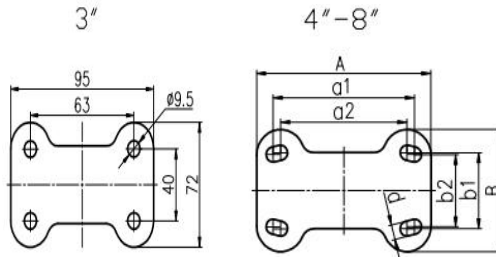
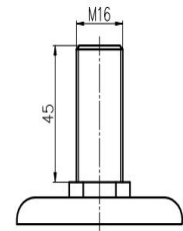


Plate Fixed



Threaded Stem

| Wheel Size (inch) | Wheel Dia. (mm) | Plate Size (mm) | Hole Spacing a1×b1 (mm) | Hole Spacing a2×b2 (mm) | Hole Size (mm) |
|-------------------|-----------------|-----------------|-------------------------|-------------------------|----------------|
| 3" | 75 | 82.5×82.5 | 64.8×64.8 | 59.2×59.2 | 9.5 |
| 4" | 100 | 97×97 | 74×74 | 67×67 | 11 |
| 5" | 130 | 110×110 | 90×90 | 75×75 | 11 |
| 6" | 150 | 120×120 | 90×90 | 75×75 | 11 |
| 8" | 200 | 140×140 | 115×115 | 100×100 | 12 |

| Wheel Size (inch) | Wheel Dia. (mm) | Plate Size (mm) | Hole Spacing a1×b1 (mm) | Hole Spacing a2×b2 (mm) | Hole Size (mm) |
|-------------------|-----------------|-----------------|-------------------------|-------------------------|----------------|
| 4" | 100 | 120×82 | 90×50 | 80×45 | 11 |
| 5" | 130 | 138×90 | 112×56 | 100×53 | 11 |
| 6" | 150 | 138×90 | 112×56 | 100×53 | 11 |
| 8" | 200 | 152×103 | 119×63 | 112×56 | 12 |

Product ID

Product Images



Wheel Size

Plate swivel

Plate fixed

Plate fixed brake

Plate swivel brake

Plate side brake

Threaded stem

Threaded stem brake

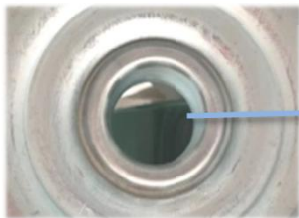
| | | | | | | | |
|----|------------|------------|------------|------------|------------|------------|------------|
| 3" | 25A01-1052 | 25A03-1052 | 25A04-1052 | 25A02-1052 | - | - | - |
| 4" | 25A10-1651 | 25A12-1651 | 25A13-1651 | 25A11-1651 | 25A72-1651 | 25A14-1651 | 25A15-1651 |
| 5" | 25A19-1652 | 25A21-1652 | 25A22-1652 | 25A30-1652 | 25A73-1652 | 25A23-1652 | 25A24-1652 |
| 6" | 25A28-1653 | 25A30-1653 | 25A31-1653 | 25A29-1653 | 25A74-1653 | 25A32-1653 | 25A33-1653 |
| 8" | 25A37-1654 | 25A39-1654 | 25A40-1654 | 25A38-1654 | - | - | - |

Product Details

The side brake is easy and convenient operate, also large operational space.



It's Japanese standard. The Kingpinless design is rotated easily and flexibly.



The wheel's working is smooth and light.



The closed double ball bearing is flexible rotation.



[English]

