

Wheel Features

Tread Material:	PU	Core Material:	High Strength PP
Bearing:	Ball Bearing	Tread Hardness:	95A±3
Temperature:	-20°C~50°C	Running Speed:	4km/h

Note: Use beyond temperature range or beyond the recommended speed may shorten product life or even damage the product.




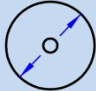





- ✔ 2 precision ball bearings, flexible rotation
- ✔ Injection polyurethane, glue-free self lock structure, oil resistance, wear resistance
- ✔ Environmental protection, quiet, effectively protect the floor
- ⚠ High temperature and humidity may shorten service life

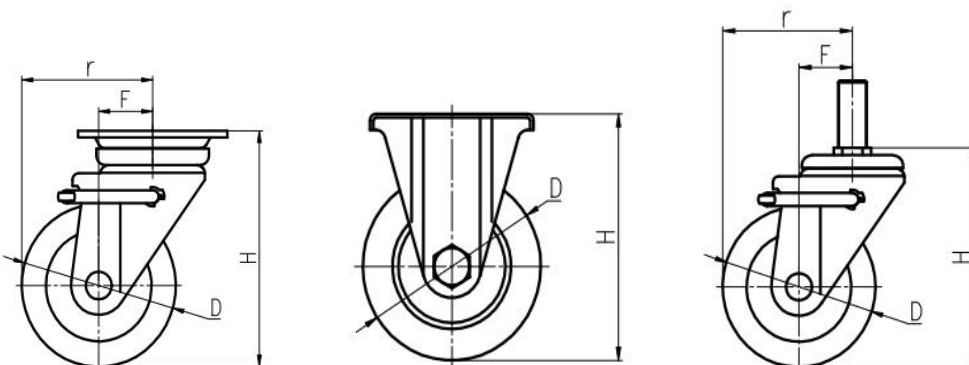


Rolling resistance	■ ■ ■ ■ □	Very good
Wear resistance	■ ■ ■ ■ ■	Excellent
Operating noise	■ ■ ■ ■ □	Very good
Floor surface preservation	■ ■ ■ ■ □	Very good

Bracket Features

- ✔ Side brake, easy to operate
- ✔ Bracket made of pressed steel plate, firm and strong
- ✔ Hollow riveted structure, effortless to rotate
- ✔ Galvanized, salt spray test over 24 hours

Parameter (mm)							
Wheel Size	Capacity	Wheel Dia.	Wheel Width	Total Height	Offset	Swivel Radius	Swivel Radius
4"	100 kg	100	32	144	35	85	85
5"	150 kg	125	35	172	38	103	103
6"	230 kg	150	38	197	40	115	115



Mounting Drawing

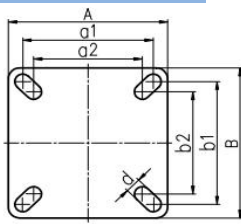


Plate Swivel/Brake

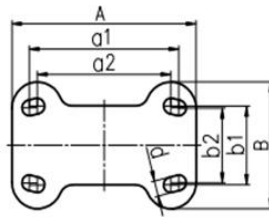
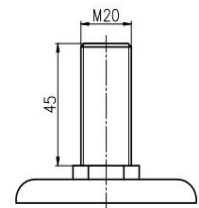


Plate Fixed



Threaded Stem

Wheel Size (inch)	Wheel Dia. (mm)	Plate Size (mm)	Hole Spacing a1×b1 (mm)	Hole Spacing a2×b2 (mm)	Hole Size (mm)	Wheel Size (inch)	Wheel Dia. (mm)	Plate Size (mm)	Hole Spacing a1×b1 (mm)	Hole Spacing a2×b2 (mm)	Hole Size (mm)
4"	100	97×97	74×74	67×67	11	4"	100	120×82	90×50	80×45	11
5"	125	110×110	90×90	75×75	11	5"	125	120×82	90×50	80×45	11
6"	150	120×120	90×90	75×75	11	6"	150	138×90	112×56	100×53	11

Product ID

Product Images



Wheel Size

Plate swivel

Plate fixed

Plate fixed brake

Plate swivel brake

Threaded stem

Threaded stem brake

4"

25X01-1078

25X03-1078

25X04-1078

25X02-1078

-

-

5"

25X10-1079

25X12-1079

25X13-1079

25X11-1079

25XA4-1079

25XA5-1079

6"

25X19-1080

25X21-1080

25X22-1080

25X20-1080

25XA0-1080

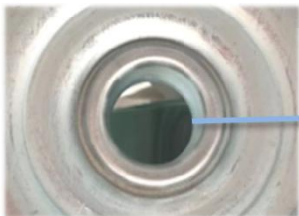
25XA1-1080

Product Details

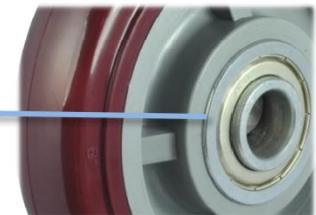
The side brake is easy and convenient operate, also large operational space.



It's Japanese standard. The Kingpinless design is rotated easily and flexibly.



The closed double ball bearing is flexible rotation.



[English]

