

Wheel Features

Tread Material:	Rubber	Core Material:	Cast Iron
Bearing:	Ball Bearing	Tread Hardness:	85A±3
Temperature:	-20°C~50°C	Running Speed:	4km/h

Note: Use beyond temperature range or beyond the recommended speed may shorten product life or even damage the product.




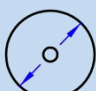


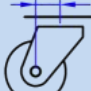

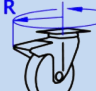
- ✔ 2 precision ball bearings, flexible rotation
- ✔ Natural rubber material, vulcanized, high rebound
- ✔ Environmental protection, quiet, effectively protect the floor
- ✔ With metal covers, thread-proof design
- ✔ Wheel core is Painted, anti-rust and anti-corrosion
- ⚠ Biodegradable rubber material, recommended to use within 3 year of production for best performance

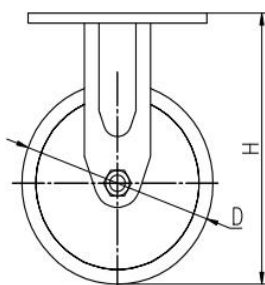
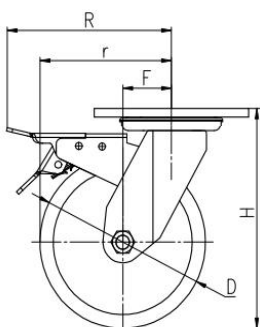


Rolling resistance	■ ■ ■ □ □	Good
Wear resistance	■ ■ ■ ■ □	Very good
Operating noise	■ ■ ■ ■ ■	Excellent
Floor surface preservation	■ ■ ■ ■ ■	Excellent

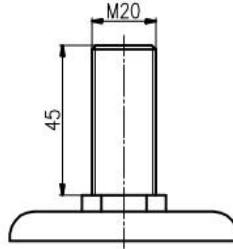
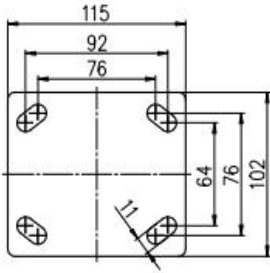
Bracket Features

- ✔ Steel plate pressed and fully welded, firm and strong
- ✔ Top plate and ball tracks are quenched to enhance strength and prolong service life
- ✔ Reinforced riveted, close gap, high structural strength
- ✔ Blue galvanized, ROHS/REACH passed, salt spray test over 72 hours
- ✔ ON/OFF pedals, stable braking effect, easy to operate
- ✔ Brake part is replaceable, convenient to maintain

Parameter (mm)	 Capacity	 Wheel Dia.	 Wheel width	 Total height	 Offset	 Swivel Radius	 Swivel Radius
5"	220 kg	125	48	165	38	101	151
6"	300 kg	150	48	190	44	119	154
8"	320 kg	200	48	240	54	154	173



Mounting Drawing



Product ID					
Product Images					
Wheel Size	Plate swivel	Plate fixed	Plate swivel brake	Threaded stem	Threaded stem brake
5"	35A63-1146	35A65-1146	35A64-1146	35A97-1146	35A94-1146
6"	35A66-1147	35A68-1147	35A67-1147	35A93-1147	35A98-1147
8"	35A69-1148	35A71-1148	35A70-1148	35A99-1148	35AA1-1148

Product Details

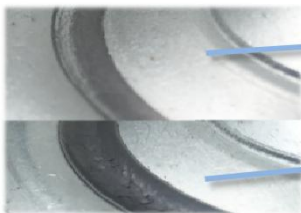


ON/OFF brake is easy to operate. Brake components can be replaced with screw connecting.



Grease nipple is convenient for maintenance. Fancy riveted structure with gap tightly.

Natural rubber wheel surface, soft and high elasticity can protect the floor effectively. Metal cover, nice appearance and anti-winding.



Quenched Ball Track has slight abrasion.

Non-quenched Ball Track' s abrasion and gap clearly.

Comparison after 10000times Rotational test.

