

Wheel Features

Tread Material:	Cast Iron	Core Material:	Cast Iron
Bearing:	Ball Bearing	Tread Hardness:	> 100D
Temperature:	-30°C~300°C	Running Speed:	4km/h

Note: Use beyond temperature range or beyond the recommended speed may shorten product life or even damage the product.



- ✔ 2 precision ball bearings,flexible rotation
- ✔ Casting iron wheel,high load capacity,high temperature resistance,lowest starting force
- ✔ Painted,anti-rust and anti-corrosion
- ⚠ Easy to rust,avoid using in wet environment
- ⚠ Wheel running may cause some noise

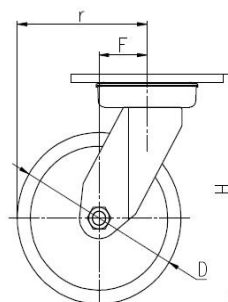
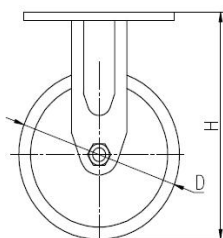
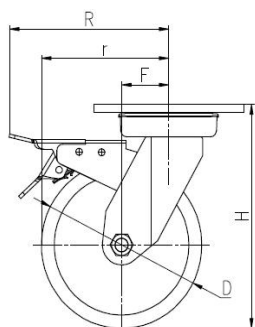


Rolling resistance	■ ■ ■ ■ □	Very good
Wear resistance	■ ■ ■ ■ □	Very good
Operating noise	■ ■ □ □ □	Acceptable
Floor surface preservation	■ □ □ □ □	Poor

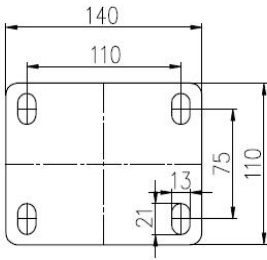
Bracket Features

- ✔ Steel plate pressed and fully welded,firm and strong
- ✔ Thickened top plate,resistant to compress which is hard to deform
- ✔ Plane bearing,high load capacity,impact resistance and flexible steering
- ✔ Blue galvanized,ROHS/REACH passed,salt spray test over 72 hours
- ✔ ON/OFF pedals,stable braking effect,easy to operate
- ✔ Brake part is replaceable,convenient to maintain

Parameter (mm)	Capacity	Wheel Dia.	Wheel Width	Total Height	Offset	Swivel Radius	Swivel Radius
5"	600 kg	125	50	176	38	101	151
6"	700 kg	150	50	201	44	119	154
8"	800 kg	200	50	252	54	154	173



Mounting Drawing



Product ID			
Product Images			
Wheel Size	Plate swivel	Plate fixed	Plate swivel brake
5"	36A04-1125	36A06-1125	36A05-1125
6"	36A07-1126	36A09-1126	36A08-1126
8"	36A10-1127	36A12-1127	36A11-1127

Product Details



ON/OFF brake is easy to operate. Brake components can be replaced with screw connecting.



Planar bearings can match high loading capacity, impact resistance and flexible in rotation.

Double-sides welding, firm and strong. The top plate is thickened by 7.5mm.



The material is thick and durable, the wheel core is painted and rust-proof.

