

Wheel Features

Tread Material:	PU	Core Material:	Cast Aluminum
Bearing:	Ball Bearing	Tread Hardness:	95A±3
Temperature:	-25°C~60°C	Running Speed:	4km/h

Note: Use beyond temperature range or beyond the recommended speed may shorten product life or even damage the product.



- ✔ 2 precision ball bearings,flexible rotation
- ✔ Cast polyurethane on aluminium core,oil resistant,wear resistant,high load capacity
- ✔ Environmental protection,quiet,effectively protect the floor
- ⚠ High temperature and humidity may shortened service life

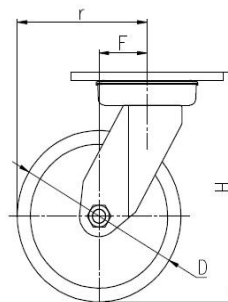
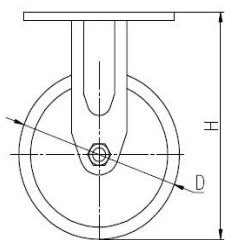
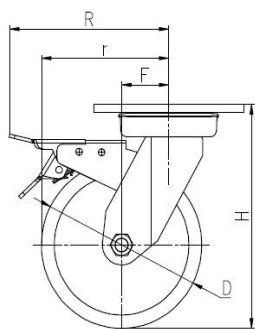


Rolling resistance	■ ■ ■ ■ □	Very good
Wear resistance	■ ■ ■ ■ ■	Excellent
Operating noise	■ ■ ■ ■ □	Very good
Floor surface preservation	■ ■ ■ ■ □	Very good

Bracket Features

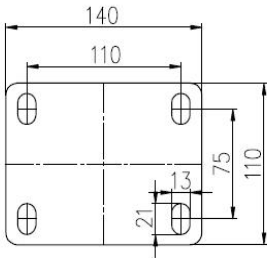
- ✔ Steel plate pressed and fully welded,firm and strong
- ✔ Thickened top plate,resistant to compress which is hard to deform
- ✔ Plane bearing,high load capacity,impact resistance and flexible steering
- ✔ Blue galvanized,ROHS/REACH passed,salt spray test over 72 hours
- ✔ ON/OFF pedals,stable braking effect,easy to operate
- ✔ Brake part is replaceable,convenient to maintain

Parameter (mm)	Capacity	Wheel Dia.	Wheel Width	Total Height	Offset	Swivel Radius	Swivel Radius
4"	380 kg	100	50	155	34	84	148
5"	460 kg	125	50	176	38	101	151
6"	600 kg	150	50	201	44	119	154
8"	760 kg	200	50	252	54	154	173



[English]

Mounting Drawing



Product ID			
Product Images			
Wheel Size	Plate swivel	Plate fixed	Plate swivel brake
4"	36A01-1428	36A03-1428	36A02-1428
5"	36A04-1429	36A06-1429	36A05-1429
6"	36A07-1430	36A09-1430	36A08-1430
8"	36A10-1431	36A12-1431	36A11-1431

Product Details



ON/OFF brake is easy to operate. Brake components can be replaced with screw connecting.



Planar bearings can match high loading capacity, impact resistance and flexible in rotation.

Double-sides welding, firm and strong. The top plate is thickened by 7.5mm.



The concave -convex designed aluminum core hub is lightweight and strong. The arc wheel moving easily.

[English]

