

Wheel Features

Tread Material:	PU	Core Material:	Cast Iron
Bearing:	Ball Bearing	Tread Hardness:	95A±3
Temperature:	-25°C~60°C	Running Speed:	4km/h

Note: Use beyond temperature range or beyond the recommended speed may shorten product life or even damage the product.



- ✔ 2 precision ball bearings,flexible rotation
- ✔ Polyurethane on casting iron core,high load capacity,wear resistance,oil resistance
- ✔ Environmental protection,quiet,effectively protect the floor
- ✔ Painted,anti-rust and anti-corrosion
- ⚠ High temperature and humidity may shortened service life

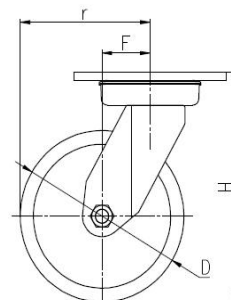
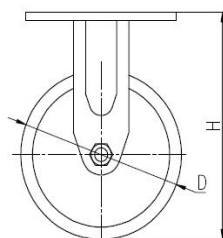
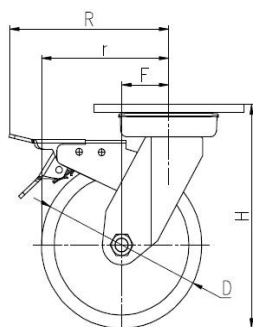


Rolling resistance	■ ■ ■ ■ □	Very good
Wear resistance	■ ■ ■ ■ ■	Excellent
Operating noise	■ ■ ■ ■ □	Very good
Floor surface preservation	■ ■ ■ ■ □	Very good

Bracket Features

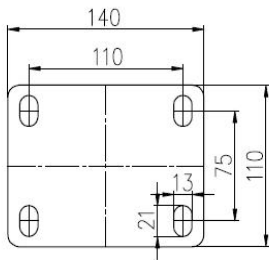
- ✔ Steel plate pressed and fully welded,firm and strong
- ✔ Thickened top plate,resistant to compress which is hard to deform
- ✔ Plane bearing,high load capacity,impact resistance and flexible steering
- ✔ Blue galvanized,ROHS/REACH passed,salt spray test over 72 hours
- ✔ ON/OFF pedals,stable braking effect,easy to operate
- ✔ Brake part is replaceable,convenient to maintain

Parameter (mm)							
Wheel Size	Capacity	Wheel Dia.	Wheel Width	Total Height	Offset	Swivel Radius	Swivel Radius
5"	430 kg	125	48	176	38	101	151
6"	530 kg	150	48	201	44	119	154
8"	650 kg	200	48	252	54	154	173



[English]

Mounting Drawing



Product ID			
Product Images			
Wheel Size	Plate swivel	Plate fixed	Plate swivel brake
5"	36A04-1136	36A06-1136	36A05-1136
6"	36A07-1137	36A09-1137	36A08-1137
8"	36A10-1138	36A12-1138	36A11-1138

Product Details



ON/OFF brake is easy to operate. Brake components can be replaced with screw connecting.



Planar bearings can match high loading capacity, impact resistance and flexible in rotation.

Double-sides welding, firm and strong. The top plate is thickened by 7.5mm.



Arc wheel moving easily. Iron cover looks nice and anti-winding.

