

Wheel Features

Tread Material:	Nylon	Core Material:	Cast Iron
Bearing:	Tapered Bearing	Tread Hardness:	75D±3
Temperature:	-30°C~90°C	Running Speed:	4km/h

Note: Use beyond temperature range or beyond the recommended speed may shorten product life or even damage the product.




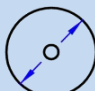
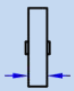

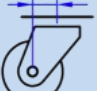


- ✔ Precision conical bearing, high load bearing, flexible rotation
- ✔ Casting nylon material, high load capacity, low starting force
- ✔ No deformation, anti-aging, durable to humid environment
- ✔ Painted, anti-rust and anti-corrosion
- ⚠ Hard wheel material, it may damage epoxy flooring
- ⚠ Wheel running may cause some noise

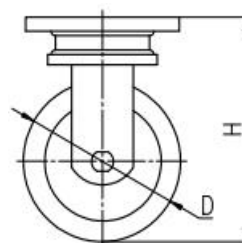
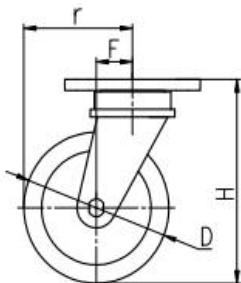


Rolling resistance	■ ■ ■ ■ □	Very good
Wear resistance	■ ■ ■ ■ ■	Excellent
Operating noise	■ ■ □ □ □	Acceptable
Floor surface preservation	■ ■ □ □ □	Acceptable

Bracket Features

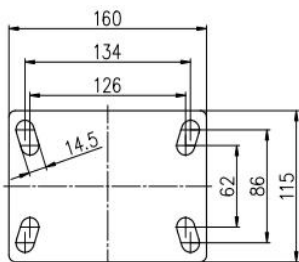
- ✔ Easy to operate, convenient to release the brake
- ✔ Plane bearing, high load capacity, impact resistance and flexible steering
- ✔ Radial conical bearing, high load capacity and impact resistance
- ✔ Single-piece forged base, fully welded, impact resistance and high load capacity
- ✔ Thickened top plate, resistant to compress. Thickened bracket wings, improved load performance.
- ✔ Powder spray treatment, superior anti-rust and anti-corrosion performance, salt spray test over 72 hours

Parameter (mm)							
Wheel Size	Capacity	Wheel Dia.	Wheel Width	Total Height	Offset	Swivel Radius	Swivel Radius
6"	2500 kg	150	64	205	60	135	270
8"	3500 kg	200	64	255	60	160	270
10"	5000 kg	250	80	350	75	200	298
12"	5000 kg	300	80	405	75	225	/

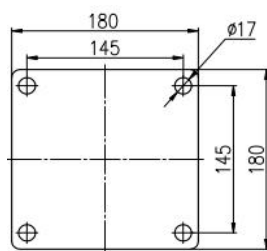


[English]

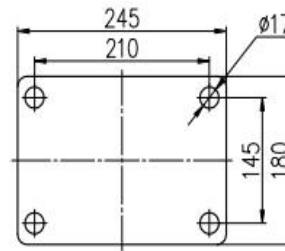
Mounting Drawing






6"-8"Plate Swivel/Brake/Fixed



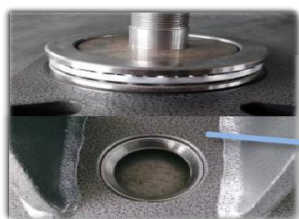
10"-12"Plate Swivel/Brake



10"-12"Plate Fixed

Product ID			
Product Images			
Wheel Size	Plate swivel	Plate fixed	Plate swivel brake
6"	40B01-1164	40B02-1164	40B22-1164
8"	40B03-1165	40B04-1165	40B23-1165
10"	40B05-1166	40B06-1166	40B24-1166
12"	40B19-1167	40B20-1167	/

Product Details



The plate and the base are integrally forged and formed.



The swivel structure is assembly by plain bearing and tapered bearing, with high loading capacity and impact resistance, and flexible.

The brake pedal is convenient to operate and the brake tension can be adjusted.



Double tapered bearing with high load capacity.

