

Wheel Features

Tread Material:	Rubber	Core Material:	Nylon
Bearing:	Ball Bearing	Tread Hardness:	75A±3
Temperature:	-20°C~50°C	Running Speed:	4km/h

Note: Use beyond temperature range or beyond the recommended speed may shorten product life or even damage the product.



- ✔ Precision ball bearing, flexible rotation
- ✔ Natural rubber material, injection bonding molding, high rebound
- ✔ Environmental protection, quiet, effectively protect the floor
- ✔ With plastic covers, thread-proof design
- ⚠ Biodegradable rubber material, recommended to use within 3 year of production for best performance

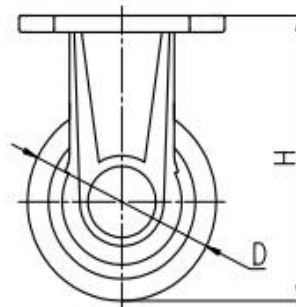
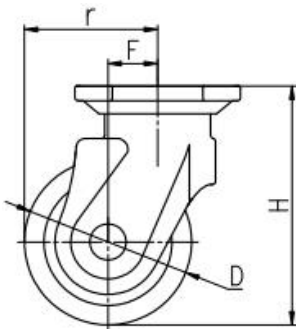


Rolling resistance	■ ■ ■ □ □	Good
Wear resistance	■ ■ ■ ■ □	Very good
Operating noise	■ ■ ■ ■ ■	Excellent
Floor surface preservation	■ ■ ■ ■ ■	Excellent

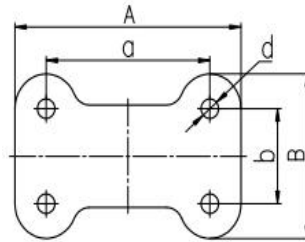
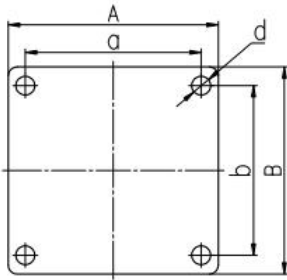
Bracket Features

- ✔ Spindle equipped with precision bearing, quiet and flexible
- ✔ Nylon-injection core, lightweight and tough

Parameter (mm)	Capacity (KG)	Wheel Dia.	Wheel Width	Total Height	Offset	Swivel Radius
5"	100 kg	100	36	145	30	80
6"	120 kg	150	38	175	36	98.5



Mounting Drawing



Product ID

Product Images



Wheel Size

Plate swivel

Plate fixed

4"

56A01-1050

56A02-1050

5"

56A03-1051

56A04-1051

Product Details



The main shaft is equipped with precision bearings, silent and flexible. Nylon bracket is integrated injection molding with high strength.

Nylon wheel core with rubber wheel surface are ultra quiet and environmental protection.

